

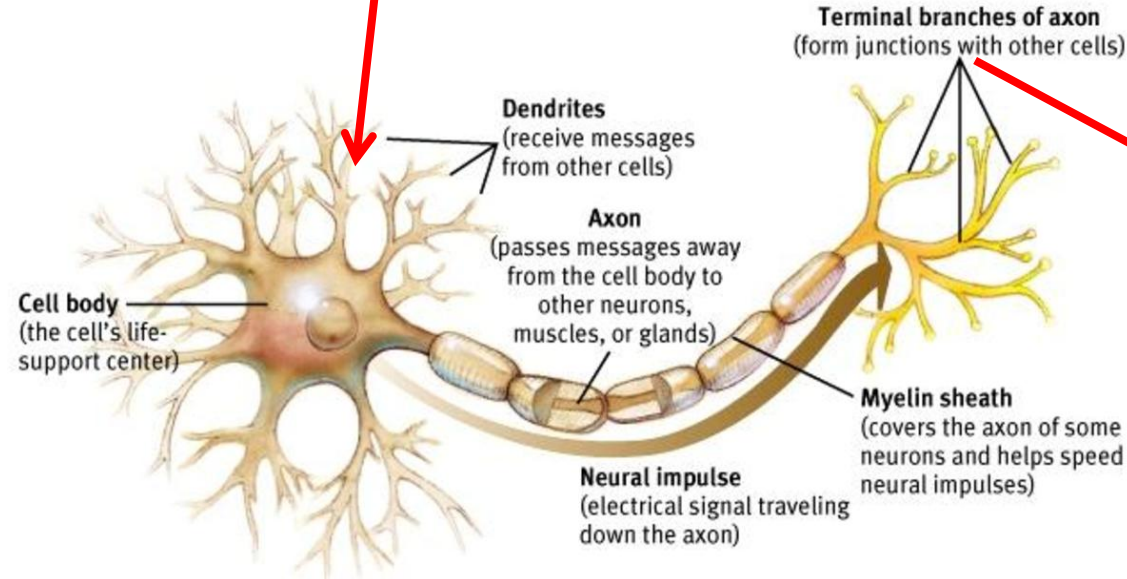
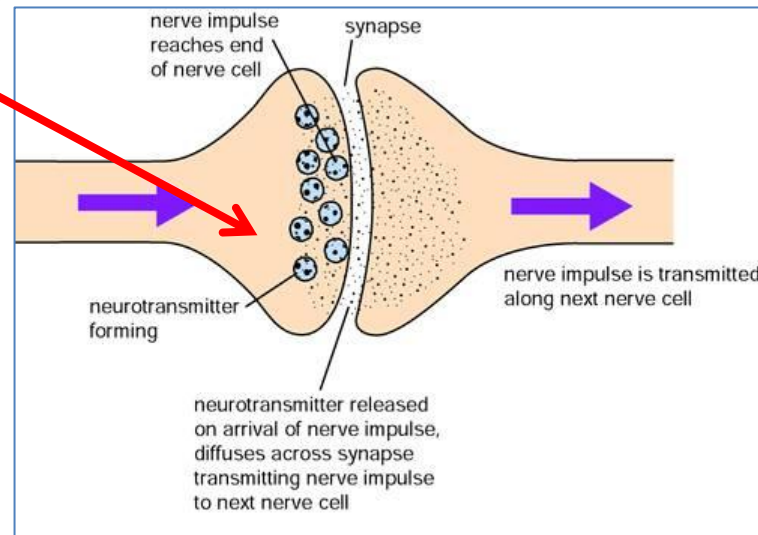
Managing the Mind

THE HUMAN BRAIN HAS APPROX. 100 BILLION NEURONS

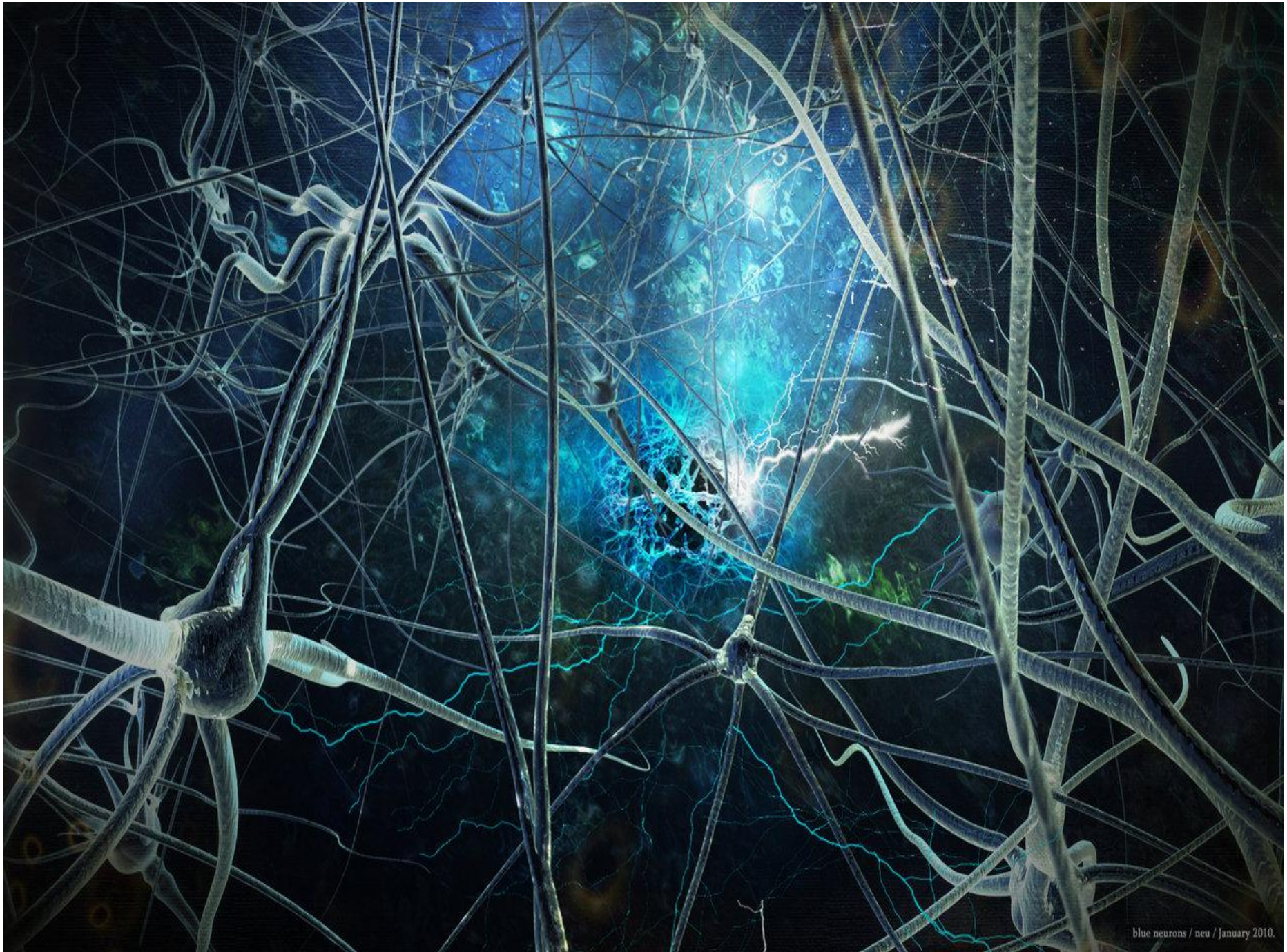
WHAT'S A NEURON LOOK LIKE?



Smooth ER Rough ER Nucleus Golgi Mitochondria
Dendrite Nuclear Membrane Nucleolus Nucleoplasm Axon



EACH NEURON HAS UP TO 40,000 CONNECTIONS (SYNAPSES) WITH OTHER CELLS, ALL TALKING TO ONE ANOTHER. NO. OF CONNECTIONS = 100 BILLION X 40,000. ANSWER - MORE CONNECTIONS THAN STARS IN THE UNIVERSE)





Olfactory Bulb

Drawing of a dog's olfactory bulb--**the first area in the brain that processes smells**--by physician and scientist Camillo Golgi. The features that appear here were revealed thanks to a revolutionary **staining method** that he pioneered. Still in use today, it effectively hides most of the brain's clutter by **marking only a very small percentage of neurons in a sample of nervous tissue**--and out of this impenetrable jungle, structure suddenly emerges. How exactly the Golgi stain works its magic has been a topic of unconfirmed speculation for over a century.

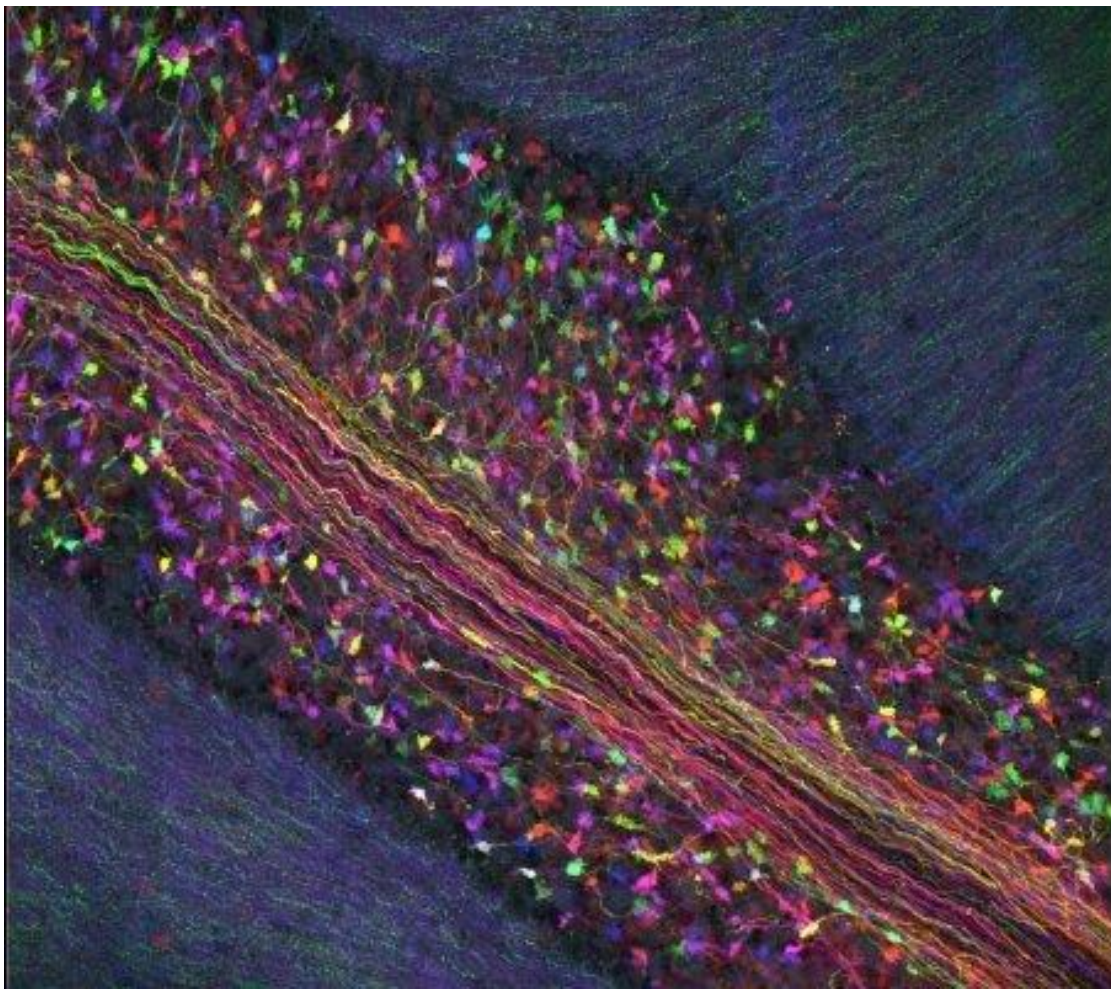
Camillo Golgi (1875). Courtesy of Dr. Paolo Mazzarello, University of Pavia - Department of Experimental Medicine - Section of General Pathology.



Purkinje Neuron

In a series of heroically difficult experiments that form the bedrock of modern neuroscience, Santiago Ramón y Cajal mastered the intricacies of the Golgi **stain** and **established the basic anatomy of the neuron and its part in the nervous system**. This drawing outlines the basic components of a Purkinje neuron: **a dense arborization of 'dendrites' captures incoming information; these all flow into an oval 'soma', which in turn sends out a thin 'axon' that broadcasts the neuron's messages to others.**

Santiago Ramón y Cajal (1899). Courtesy of Dr. Juan A. de Carlos. Cajal Legacy, Instituto Cajal (CSIC).



Brainbow: Cerebellum

A significant shortcoming of the Golgi stain is that since neurons in the brain are small, convoluted, and densely packed, it is impossible to tell neighbors apart from one another. The 'Brainbow' transgenic mouse, which owes its existence to a breathtakingly elegant molecular biology magic trick (explained in detail in the book), tackles this problem by bestowing individual spectral identities on adjacent neurons.

This photomicrograph shows the endings of axons in the cerebellum, called rosettes because of their flowerlike appearance.

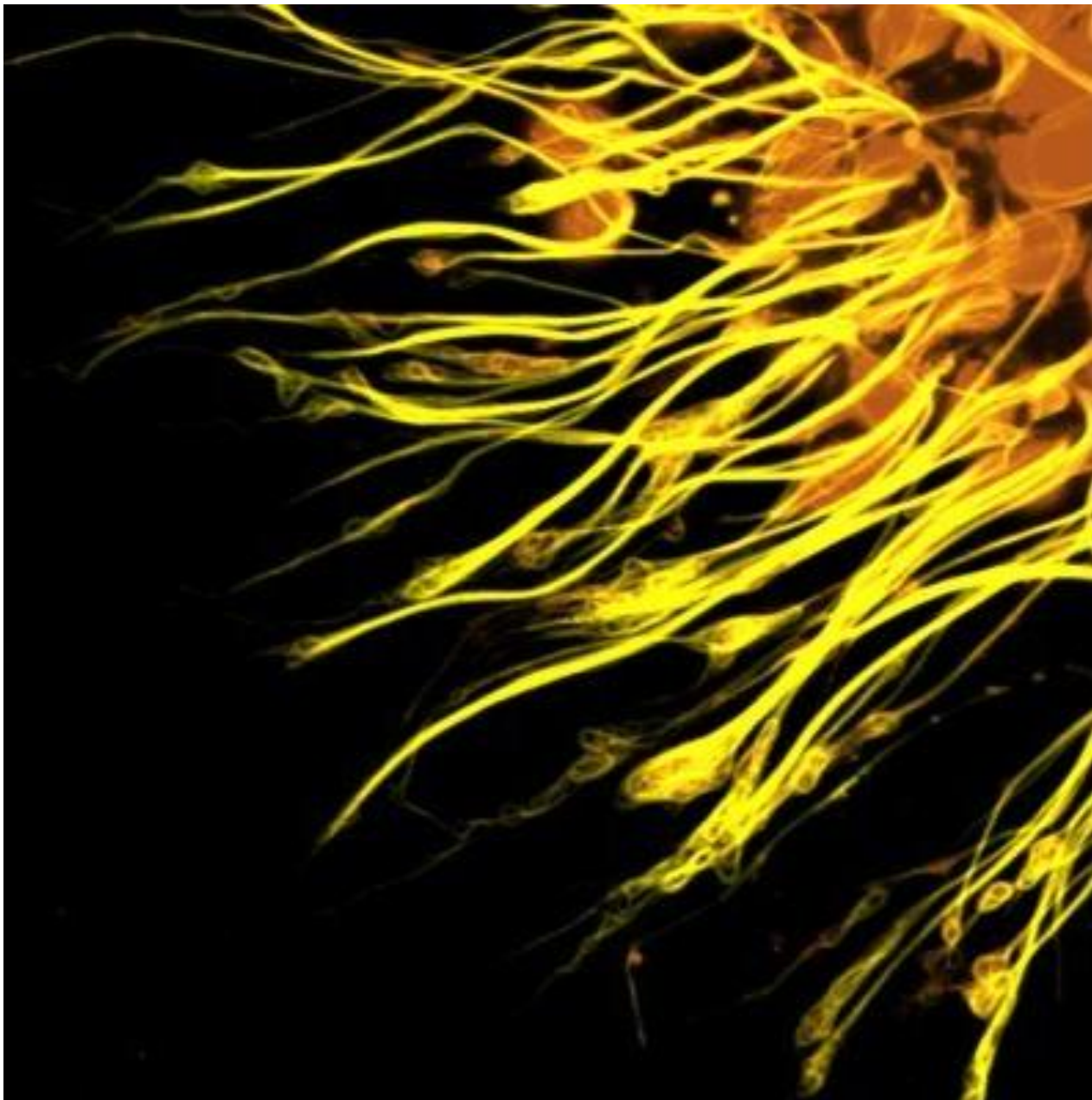
FamilyWeissman, Jeff Lichtman and Joshua Sanes (2007).



Brainbow: Axons

The Brainbow technique offers the tantalizing promise of **uncovering both fine, and large-scale properties of neural architectures**, and may someday deliver one of the field's **major aims: a precise diagram of neural connectivity**. This second photomicrograph from a Brainbowmouse **reveals the disposition of axons that regulate the contraction of certain muscles**.

Ryan Draft, Jeff Lichtman and Joshua Sanes (2007).



Neuron Scaffolding

This sample was prepared by performing an antibody staining, which exploits the extraordinary ability of natural antibodies--normally trained against foreign pathogens--to recognize specific molecules. **This photomicrograph reveals the arrangement of proteins that form the elaborate molecular scaffolding of axons.**

Michael Hendricks and Suresh Jesuthasan (2008).



Retina

This **photomicrograph of a chick's retina** was also produced using an antibody staining. **It reveals the three basic stages of visual processing by the circuit in the eye that detects light and transforms it into signals the brain can understand.** At the top of the image are the retina's photoreceptor cells (in gray)-the familiar rods and cones-that **capture photons of light and translates them into electrical currents.**

Andy Fischer (2008).



Axons Growing In A Dish

The previous images were all acquired using light-based microscopes. To study structures smaller than those 'visible' to light (yes, there is a limit on how finely light can 'see!'), researchers often turn to **electron-based microscopes that shine a beam of electrons at their sample. This image is a close-up view of axons (beige) growing in a dish (brown and green).**

Thomas Deerinck and Mark Ellisman (2009).

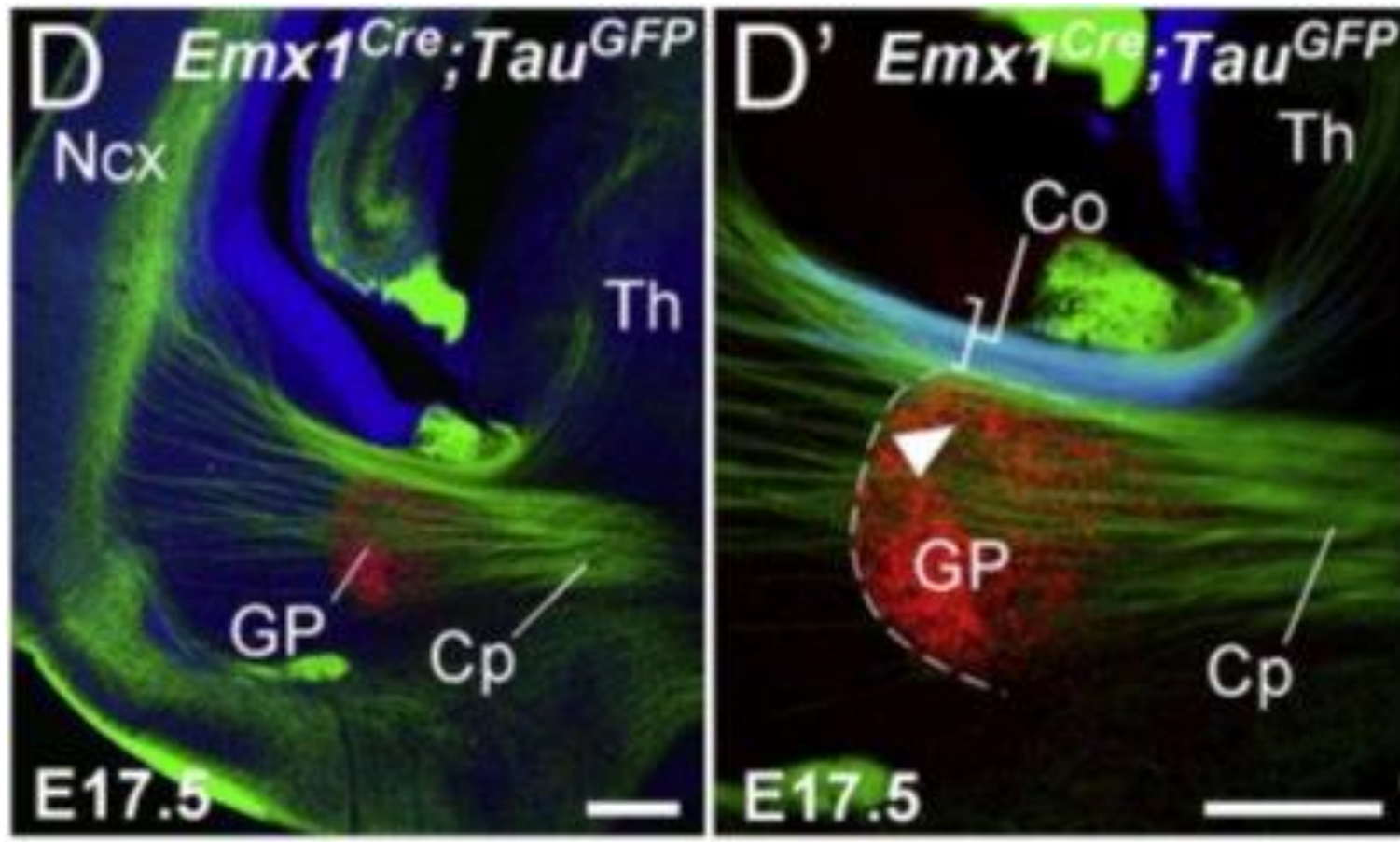


Axon Pathways In A Live Human Patient

A whole new universe opened up following the development of **magnetic resonance imaging (MRI)** and its application to examining live human brains. One flavor of MRI tracks **the diffusion of water molecules within the brain, which betrays the pattern of axons** stretched across the organ. This image reveals severe **disruptions in the bottom area of the brain, where the patient has suffered a stroke.**

*Henning U. Voss and
Nicholas D. Schiff (2008).*

Researchers from the École Normale Supérieure in Paris, France looked at [how neurons find their way](#) from the thalamus in the middle of the brain to the outermost folds of the cortex.



[‘connectomics’](#) - Mapping the connections of the brain.

The next big challenge of neuroscience and the main topic of the [Human Brain Project](#) in Europe and the [BRAIN initiative](#) in the US.

NOW TELL ME WHETHER YOU BELIEVE IN CREATION OR EVOLUTION?

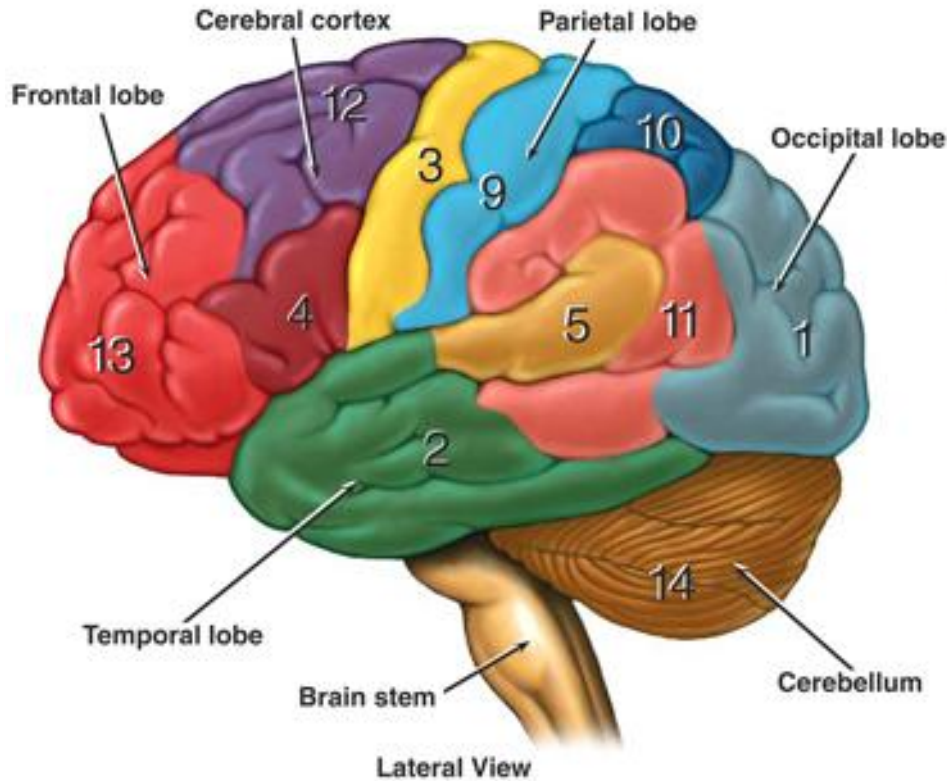
IF YOU ARE RUSTED ON TO A BELIEF IN EVOLUTION, THINK AGAIN

- **CHANCE?** DO YOU REALLY BELIEVE THAT ALL THE BRAIN FUNCTIONS, COMPONENTS, WORKINGS AND INTER-CONNECTEDNESS CAME ABOUT BY CHANCE?
- **EVOLVED?** DO YOU REALLY BELIEVE THAT HIGHER ORDER HUMAN BRAIN MATTER AND FUNCTIONS EVOLVED FROM A 'REPTILIAN" BRAIN BY DNA BEING ADDED BY CHANCE TO PROVIDE THE DESIGN FOR A HUMAN BRAIN?
- **DESIGN?** DO YOU REALLY BELIEVE THAT THERE'S NO EVIDENCE FOR A DESIGNER AND THAT COMMON DESIGN FEATURES TO ANIMALS PROVES CONCLUSIVELY WE EVOLVED FROM ANIMALS, RATHER THAN FROM A COMMON DESIGNER?
- **MIND?** – DO YOU REALLY BELIEVE YOUR MIND IS ONLY PHYSICAL AND THAT YOUR MENTAL PROCESSES ARE ONLY CHEMICAL AND ALL THIS DIES AT DEATH?

NOT CONVINCED? THEN YOU PREFER FANTASY TO REALITY, AND LIES TO TRUTH. YOU NEED TO EXPLORE THE TRUTH. IT'S A MATTER OF LIFE AND DEATH.

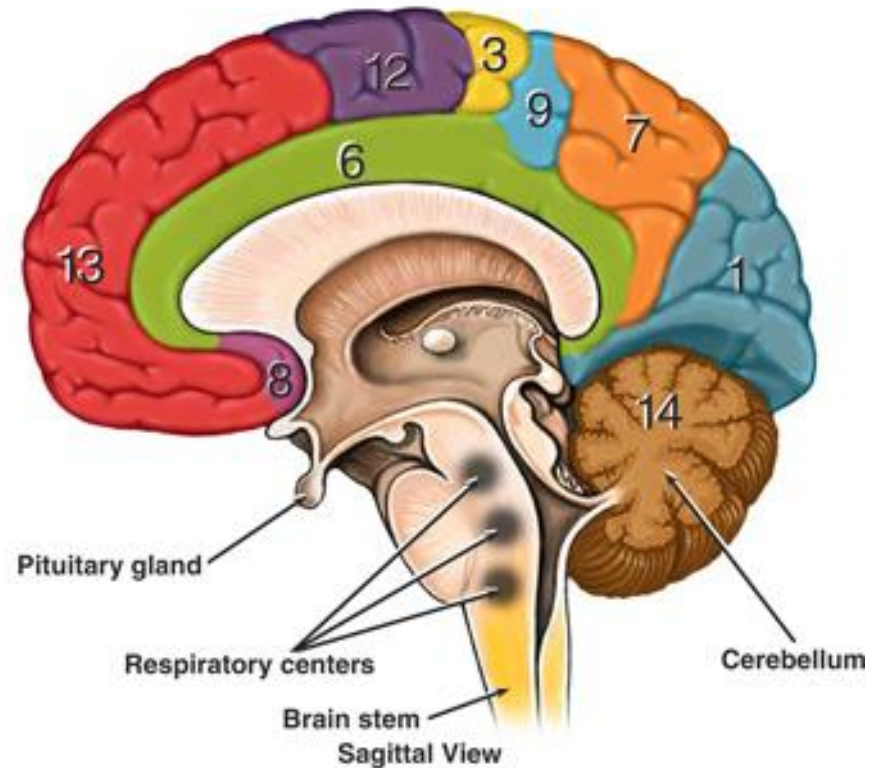
BUT WAIT ... THERE'S MORE!

THE HUMAN BRAIN HAS 14 FUNCTIONAL AREAS



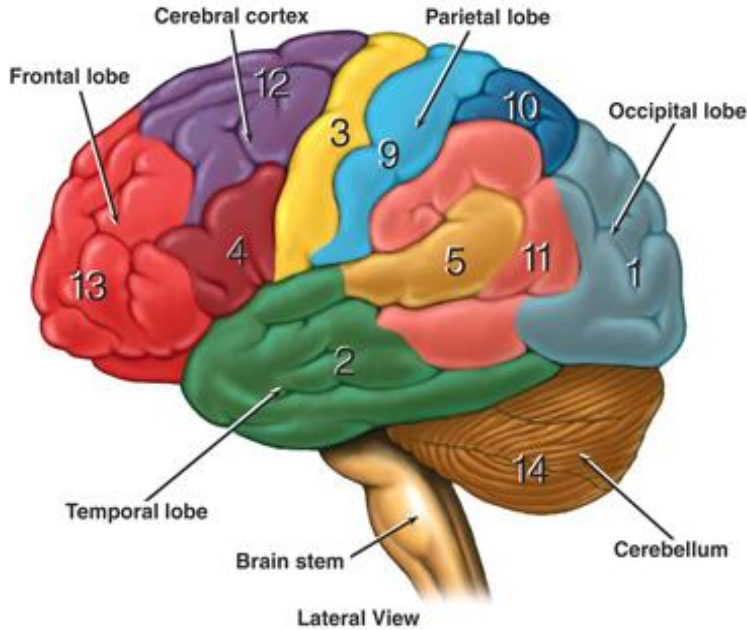
SIDE VIEW LOOKING LEFT

- CAN'T SEE 6, 7 & 8 IN THIS VIEW

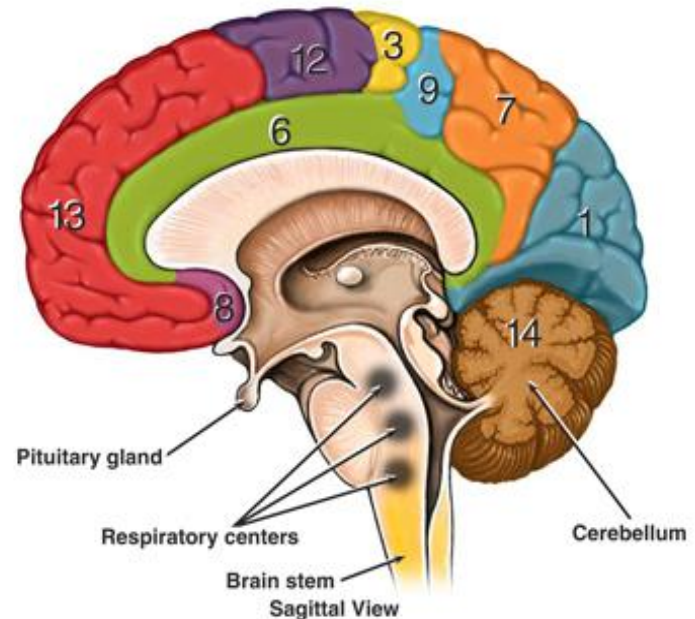


CUTAWAY VIEW THROUGH THE MIDDLE

- CAN SEE 6, 7 & 8 IN THIS VIEW



Lateral View



Sagittal View

Functional Area

Functions

1. VISUAL	Sight, image recognition & perception
2. ASSOCIATION	Memory Equilibrium. Emotion
3. MOTOR 1	Initiate voluntary muscles
4. BROCA'S	Speech muscles
5. AUDITORY	Hearing
6. EMOTIONAL	Pain, hunger, fight/flight
7. SENSORY 1	Sensory association

Functional Area

Functions

8. OFFACTORY	Smelling
9. SENSORY 2	From muscles & skin
10. SOMATO SENSORY	Evaluate weight, temperature of objects
11. WERNICKE'S	Language comprehension
12. MOTOR 2	Eye movement & orientation
13. HIGHER MENTAL	Concentration Planning Judgment Emotional expression inhibition
14. MOTOR 3	Sensory association

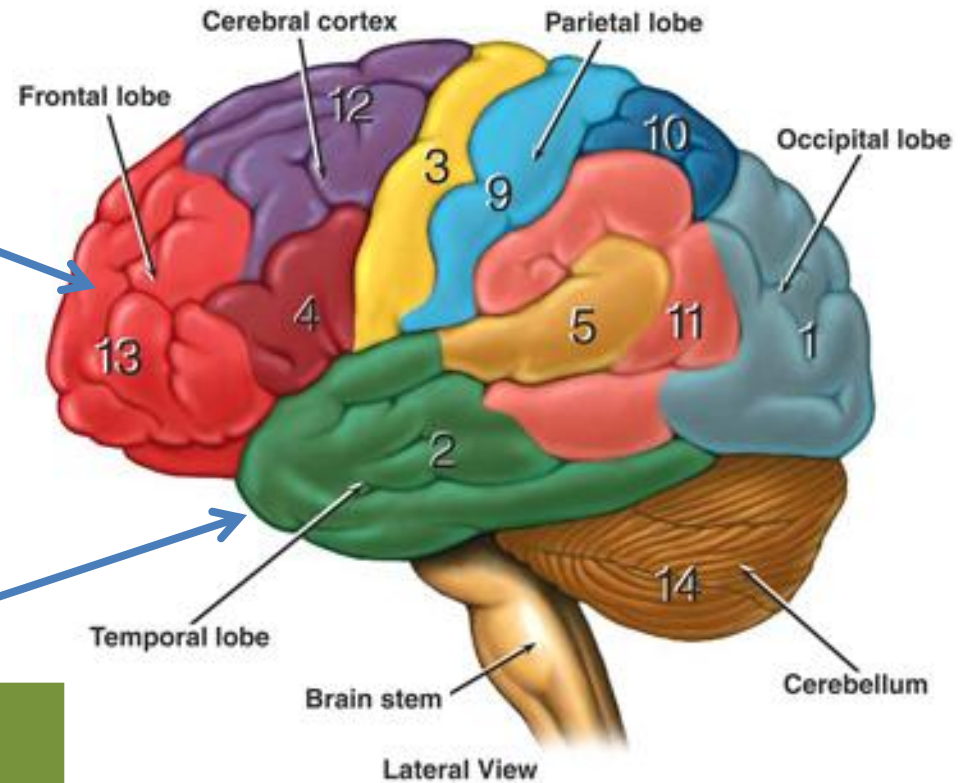
TYPES OF MIND?

CONSCIOUS MIND?

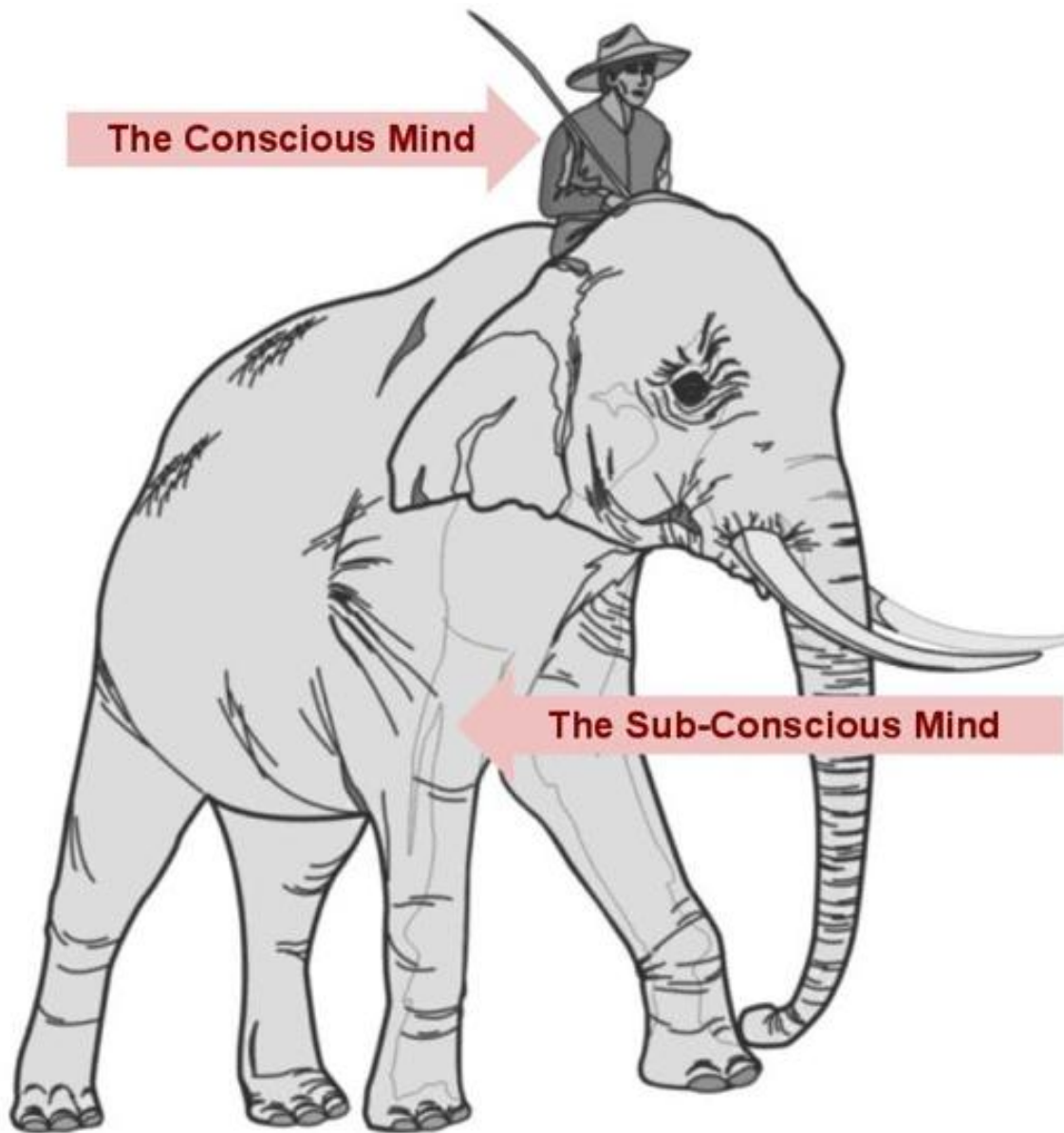
13. HIGHER MENTAL	Concentration Planning Judgment Emotional expression inhibition
----------------------------------	--

SUB-CONSCIOUS MIND?

2. ASSOCIATION	Memory Equilibrium. Emotion
-----------------------	--



Example: “The mind *is*
like a rider on an
elephant.”



- RIDER HAS REINS ON ELEPHANT
- ELEPHANT PROGRAMMED TO OBEY?
- RIDER CAN COMMAND GO, TURN, STOP
- PERFECT UNISON?
- RIDER CAN EXPRESS PLEASURE/DISPLEASURE
- SO CAN THE ELEPHANT?
- RIDER IN CONTROL AS LONG AS THE ELEPHANT DOESN'T HAVE DESIRES OF ITS OWN
- WHEN ELEPHANT REALLY WANTS TO DO SOMETHING THE RIDER IS NO MATCH FOR IT

**QUESTIONS: 1. MODERN MIND?
2. IS THE RIDER SUBJECT TO REINS ("AN INVISIBLE HAND"?)**

Does the rider (or the elephant) have a “moral compass” in the mind

A Moral Compass

- anything which serves to guide a person's decisions based on morals or virtues
- an inner sense which distinguishes what is right from what is wrong, functioning as a guide (like the needle of a compass) for morally appropriate behaviour.
- a belief system, etc. serving as a guide for morally appropriate behaviour
- the full range of virtues, vices, or actions which may affect others and which are available as choices (like the directions on the face of a compass) to a person, to a group, or to people in general.



IS ANYONE'S MORAL COMPASS FAULTY?

Right

I don't know if it's right or wrong

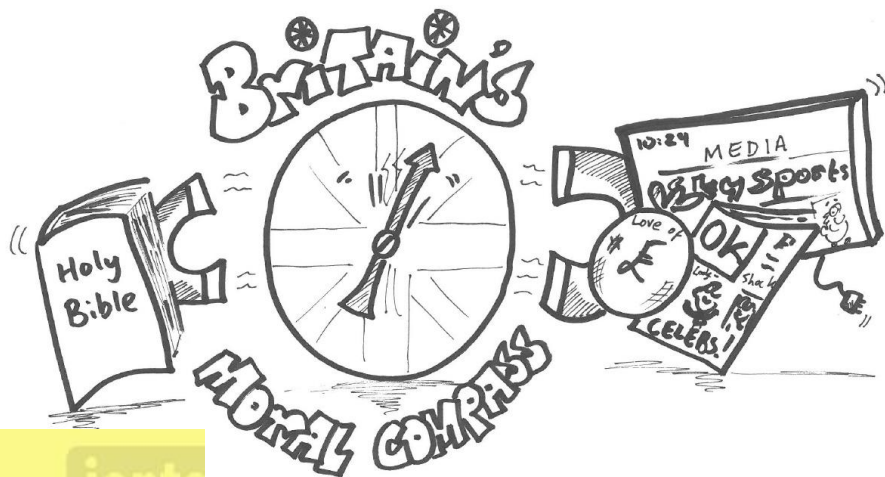


Depends on the situation

It's an individual choice, so what's the big deal

As long as I don't get caught

Wrong



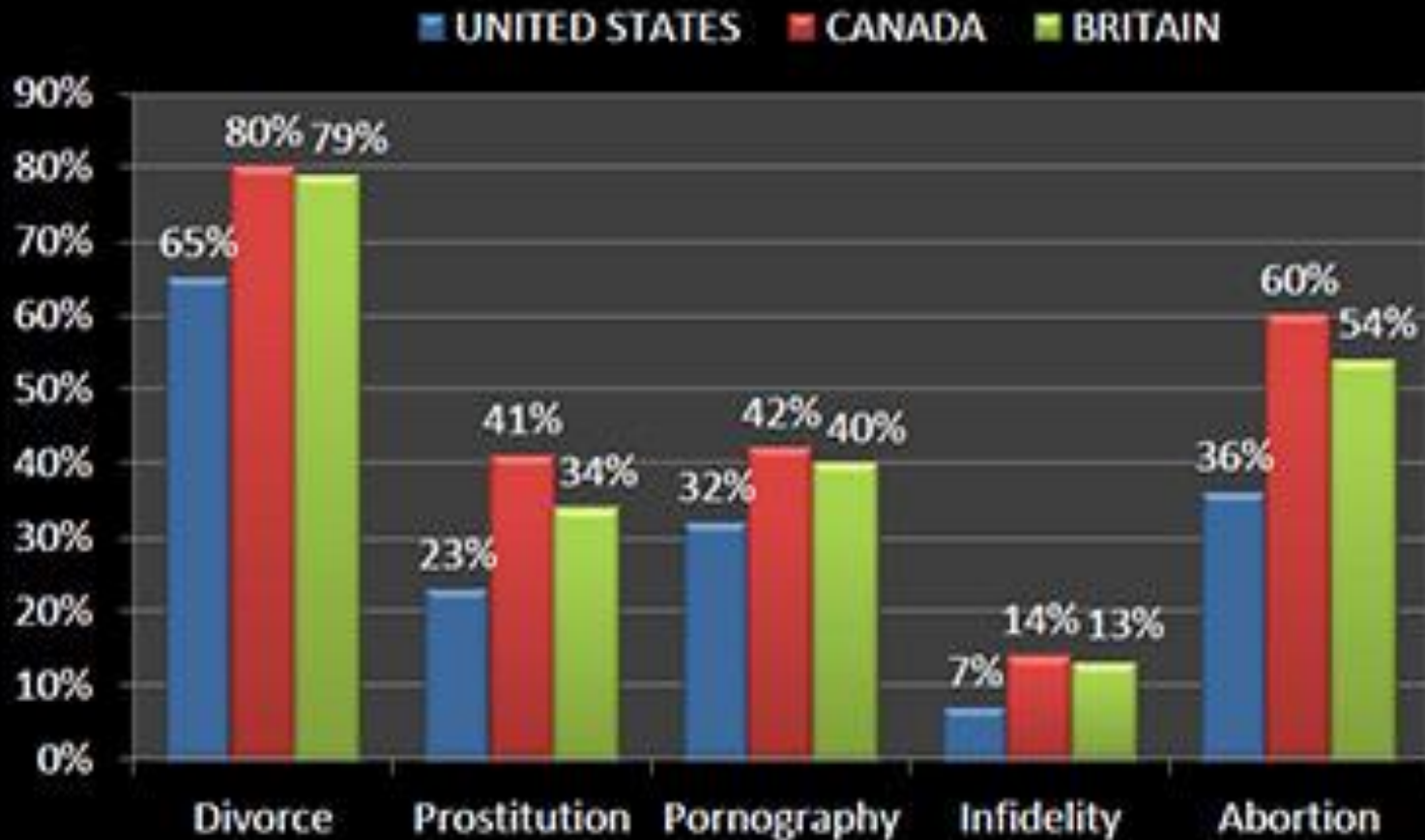
Search ID: babn335

"We can follow your moral compass as long as it doesn't interfere with my financial GPS."



HAVE THE NATIONS LOST THEIR MORAL COMPASS?

Percentage of Respondents Who Believe Each Issue is "Morally Acceptable"



WHAT KIND OF MORAL COMPASS DO OUR LEADERS HAVE?

I think if you look at people,
whether in business or
government, who haven't had
any moral compass, who've
just changed to say whatever
they thought the popular
thing was, in the end they're
losers.



Michael Bloomberg
American business magnate
Born 1942

QUOTEHD.COM

WHO ELSE LOSES?

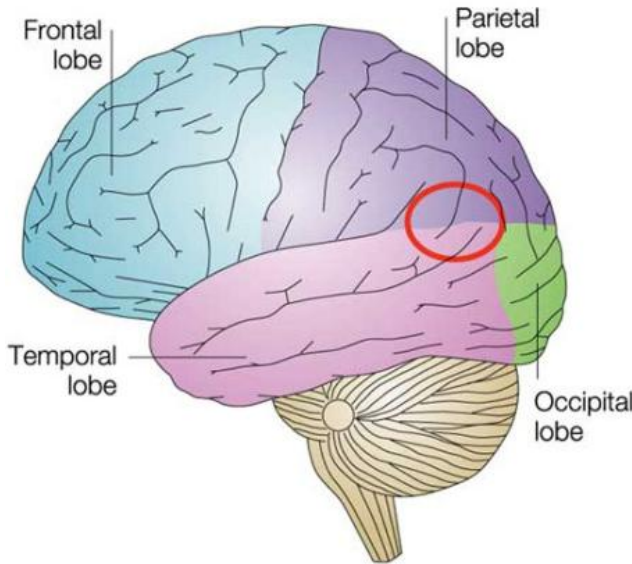
JESUS MUST BE THE FOCUS

- Lost? How do we get direction? Find which way points north!



Psa 48:2 (KJV) Beautiful for situation, the joy of the whole earth, is mount Zion, on the sides of the north, the city of the great King.

Scientists discover moral compass in the brain which can be controlled by magnets



The moral compass, technically named the right temporo-parietal junction, lies just behind the right ear in the brain.

This part of the brain “becomes more active when we think about other people's misdemeanours or good works”.

“In an extraordinary experiment, researchers were able to use powerful magnets to disrupt this area of the brain and make people temporarily less moral”.

“The technique generates a magnetic field on a small part of the skull which creates weak electric currents in the brain. These currents interfere with nearby brain cells and prevent them from firing normally.”

“It's not the first time that scientists have found parts of the brain that specialise in ethics and morality. Last year American scientists claimed to have found a "god spot" - a region of the brain that controls religious belief”.

Identity Is Lost Without A Moral Compass

Research on neurodegenerative diseases suggests moral traits like kindness and integrity define who we are.

Strohminger and Nichols focused on three neurodegenerative diseases:

- Frontotemporal dementia (FTD)
- Alzheimer's disease
- Amyotrophic lateral sclerosis, better known as ALS or Lou Gehrig's disease

Of the three, FTD is the one most likely to have a moral impact—its symptoms include a loss of empathy, poor judgment, and increasingly inappropriate behavior.

248 friends and family of patients suffering from FTD, Alzheimer's, or ALS, were asked "Do you feel like you still know who the patient is?" - using five-point scales.

- ALS patients averaged about 4.1 points (note: body affected, not the mind)
 - Alzheimers - 3.8
 - FTD - 3.4 for FTD
- the research suggested that morality was at the core of how people conceived their loved ones' identities, perhaps even more than memory.

Back to the rider & the elephant analogy

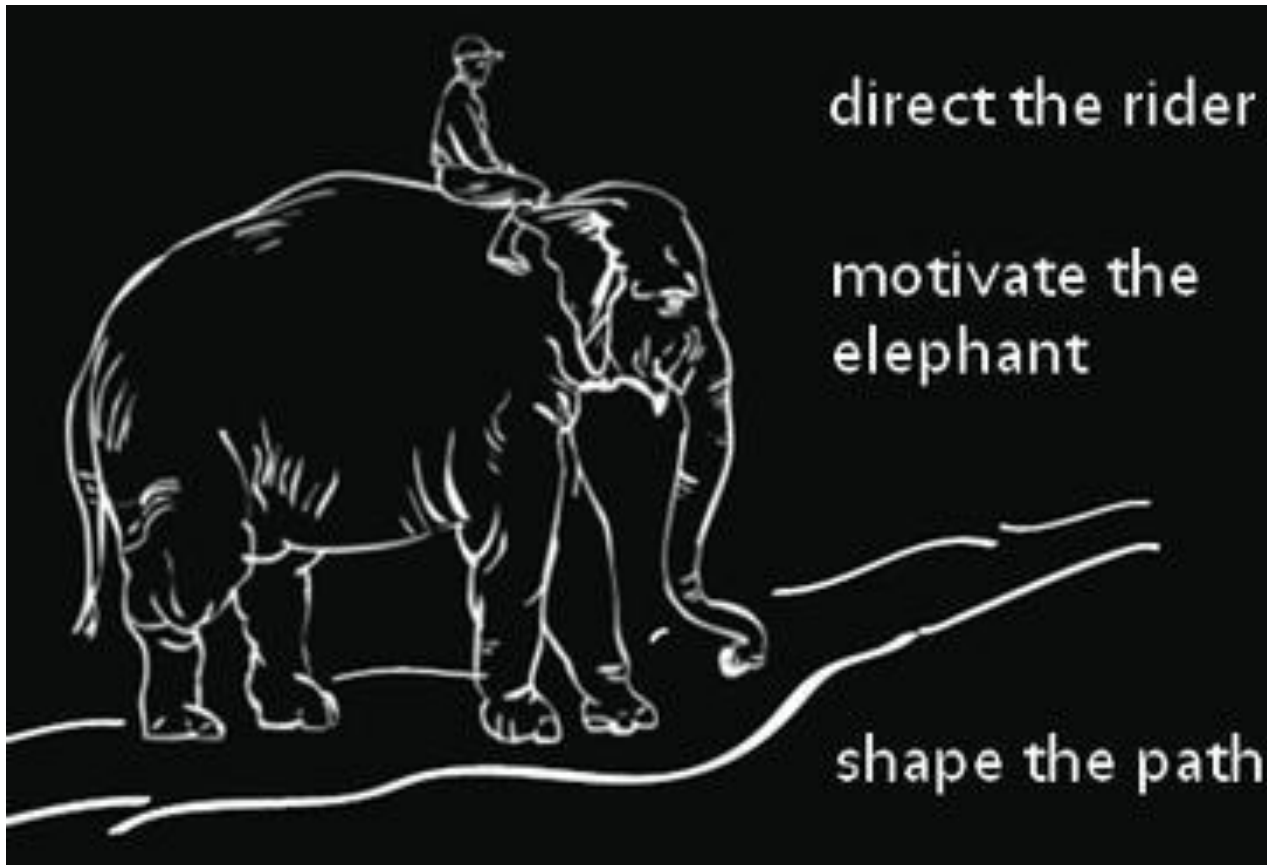
CAN WE GET TRACTION IN THE RIGHT DIRECTION?

When the Elephant really wants something, the Rider can be trusted to find rationalizations for it.

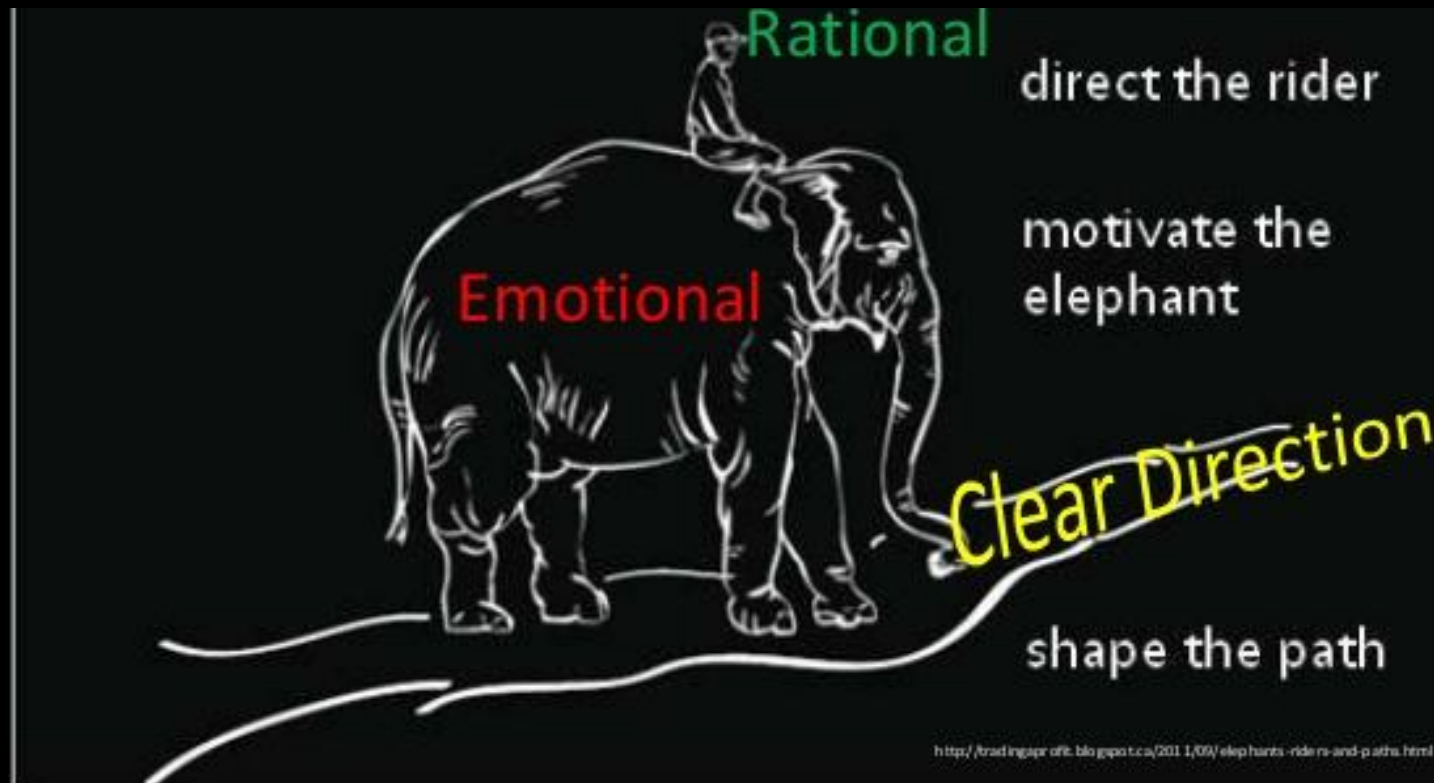
The Rider has his own issues. He's a navel-gazer, an analyzer, a wheel-spinner. If the Rider isn't sure exactly what direction to go, he tends to lead the Elephant in circles.

CHANGE PROCESS?

To change behavior, you've got to direct the Rider, motivate the Elephant, and shape the Path. If you can do all three at once, dramatic change can happen

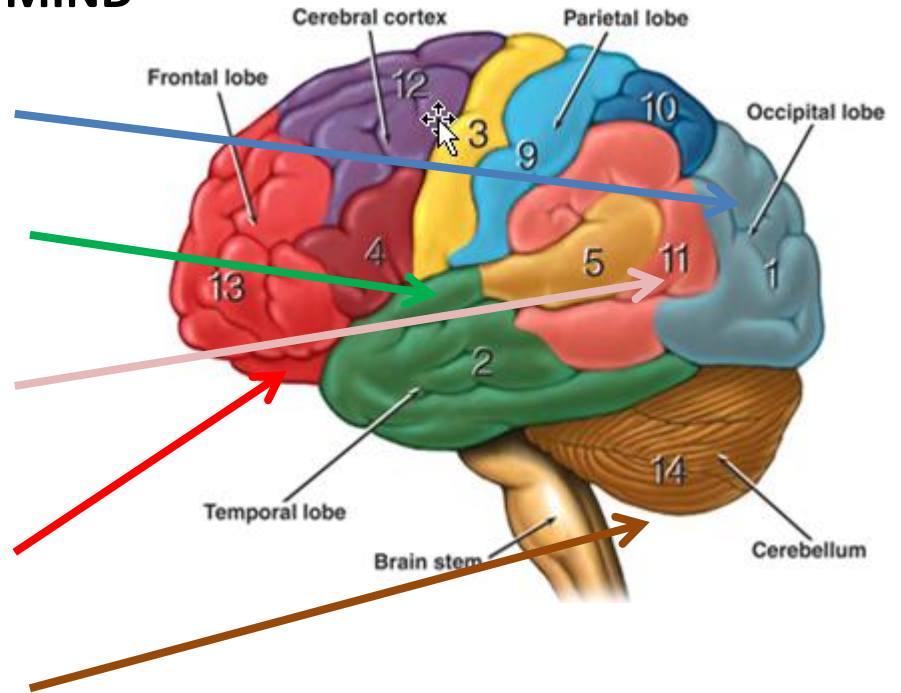


If you want to change things, you've got to **appeal to both**. The **Rider** provides the planning and direction, and the **Elephant** provides the energy.



RELEVANT AREAS FOR THE CHRISTIAN MIND

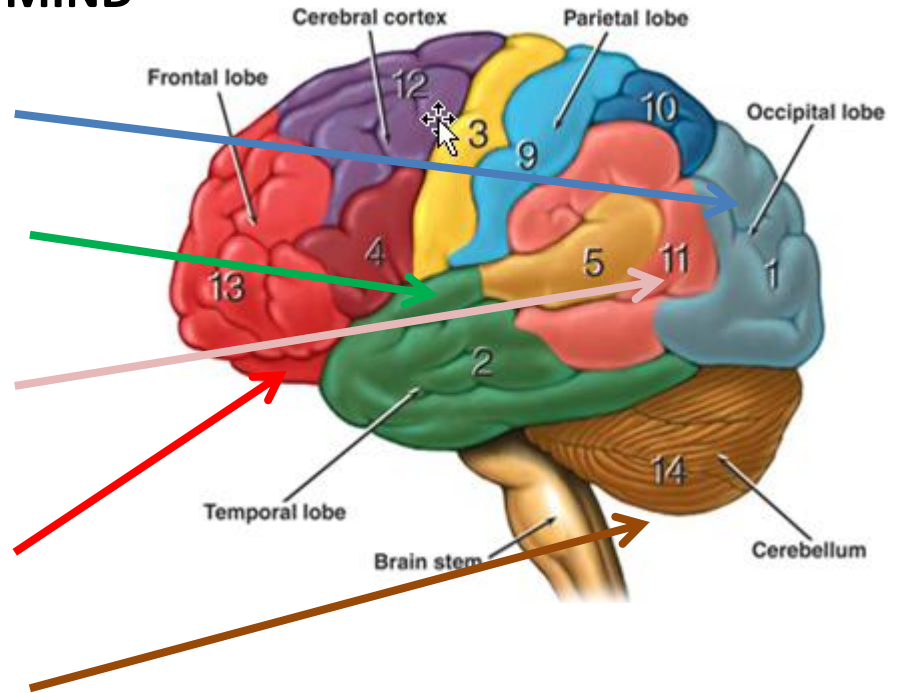
1. VISUAL	Sight, image recognition & perception
2. ASSOCIATION	Memory Equilibrium. Emotion
6. EMOTIONAL	Pain, hunger, fight/flight
11. WERNICKE'S	Language comprehension
13. HIGHER MENTAL	Concentration Planning Judgment Emotional expression inhibition
14. MOTOR 3	Sensory association



NOW FOR A CHRISTIAN QUIZ

RELEVANT AREAS FOR THE CHRISTIAN MIND

1. VISUAL	Sight, image recognition & perception
2. ASSOCIATION	Memory Equilibrium. Emotion
6. EMOTIONAL	Pain, hunger, fight/flight
11. WERNICKE'S	Language comprehension
13. HIGHER MENTAL	Concentration Planning Judgment Emotional expression inhibition
14. MOTOR 3	Sensory association



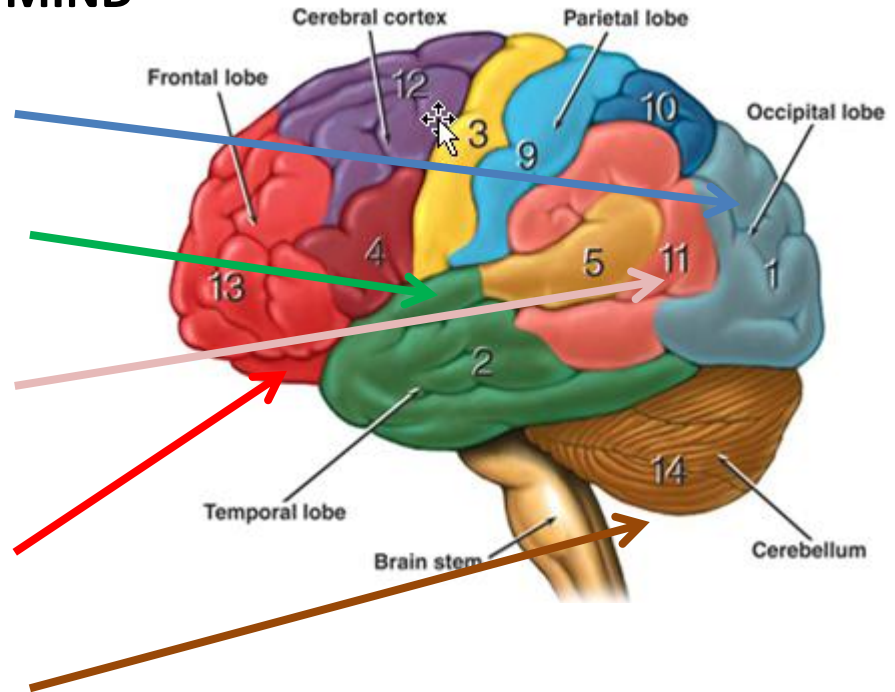
WHERE ARE THE FOLLOWING IN THE MIND?

LOVE FOR SPOUSE? LOVE FOR YOUR CHILD?
LOVE FOR GOD? LOVE NEIGHBOUR?

WHAT DOES THE BIBLE SAY?
HOW TO INCREASE THEM?

RELEVANT AREAS FOR THE CHRISTIAN MIND

1. VISUAL	Sight, image recognition & perception
2. ASSOCIATION	Memory Equilibrium. Emotion
6. EMOTIONAL	Pain, hunger, fight/flight
11. WERNICKE'S	Language comprehension
13. HIGHER MENTAL	Concentration Planning Judgment Emotional expression inhibition
14. MOTOR 3	Sensory association



WHERE ARE THE FOLLOWING IN THE MIND?

RIGHTEOUSNESS?

SIN?

GOOD MEMORIES?

BAD MEMORIES?

KNOWLEDGE OF GOOD?

KNOWLEDGE OF EVIL?

HOLINESS?

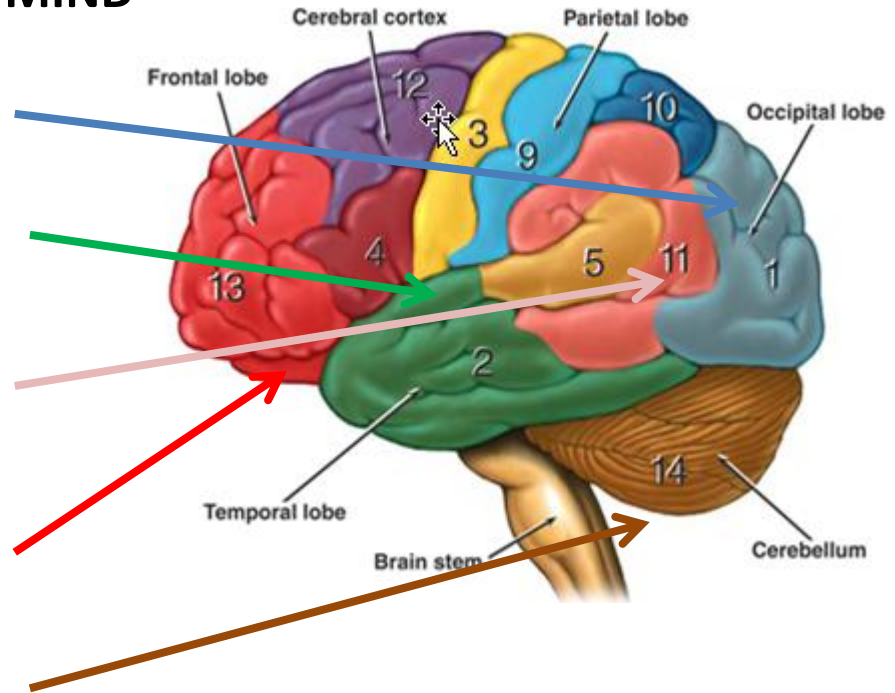
GUILT?

WHAT DOES THE BIBLE SAY?

HOW TO INCREASE THEM?

RELEVANT AREAS FOR THE CHRISTIAN MIND

1. VISUAL	Sight, image recognition & perception
2. ASSOCIATION	Memory Equilibrium. Emotion
6. EMOTIONAL	Pain, hunger, fight/flight
11. WERNICKE'S	Language comprehension
13. HIGHER MENTAL	Concentration Planning Judgment Emotional expression inhibition
14. MOTOR 3	Sensory association



WHERE ARE THE FOLLOWING IN THE MIND?

EMOTIONS?

HEART?

SELF?

MORALS?

PASSIONS?

SOUL?

CHARACTER?

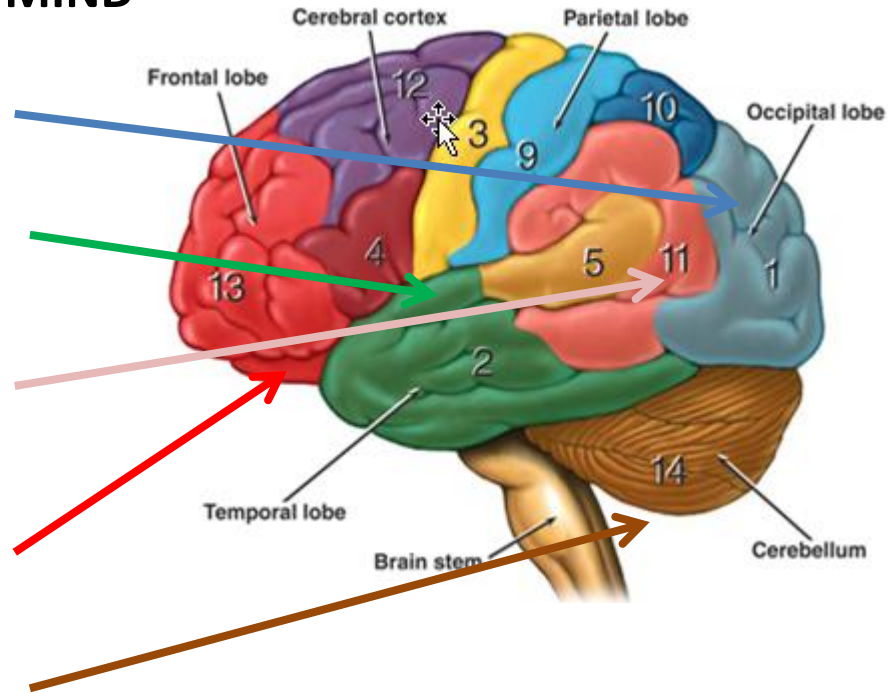
WILL?

WHAT DOES THE BIBLE SAY?

HOW TO INCREASE THEM?

RELEVANT AREAS FOR THE CHRISTIAN MIND

1. VISUAL	Sight, image recognition & perception
2. ASSOCIATION	Memory Equilibrium. Emotion
6. EMOTIONAL	Pain, hunger, fight/flight
11. WERNICKE'S	Language comprehension
13. HIGHER MENTAL	Concentration Planning Judgment Emotional expression inhibition
14. MOTOR 3	Sensory association



WHERE ARE THE FOLLOWING IN THE MIND?

WAY? TRUTH? LIFE? THE WORD? VIRTUES?

GODLY WISDOM?

HUMAN WISDOM?

GODLY UNDERSTANDING?

HUMAN UNDERSTANDING

GODLY KNOWLEDGE

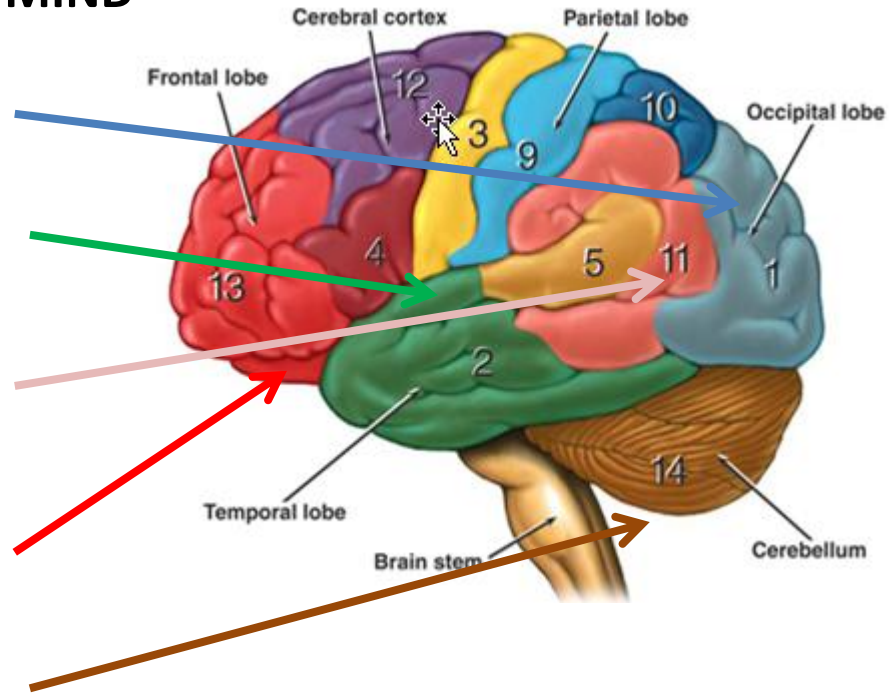
EARTHLY KNOWLEDGE

WHAT DOES THE BIBLE SAY?

HOW TO INCREASE THEM?

RELEVANT AREAS FOR THE CHRISTIAN MIND

1. VISUAL	Sight, image recognition & perception
2. ASSOCIATION	Memory Equilibrium. Emotion
6. EMOTIONAL	Pain, hunger, fight/flight
11. WERNICKE'S	Language comprehension
13. HIGHER MENTAL	Concentration Planning Judgment Emotional expression inhibition
14. MOTOR 3	Sensory association



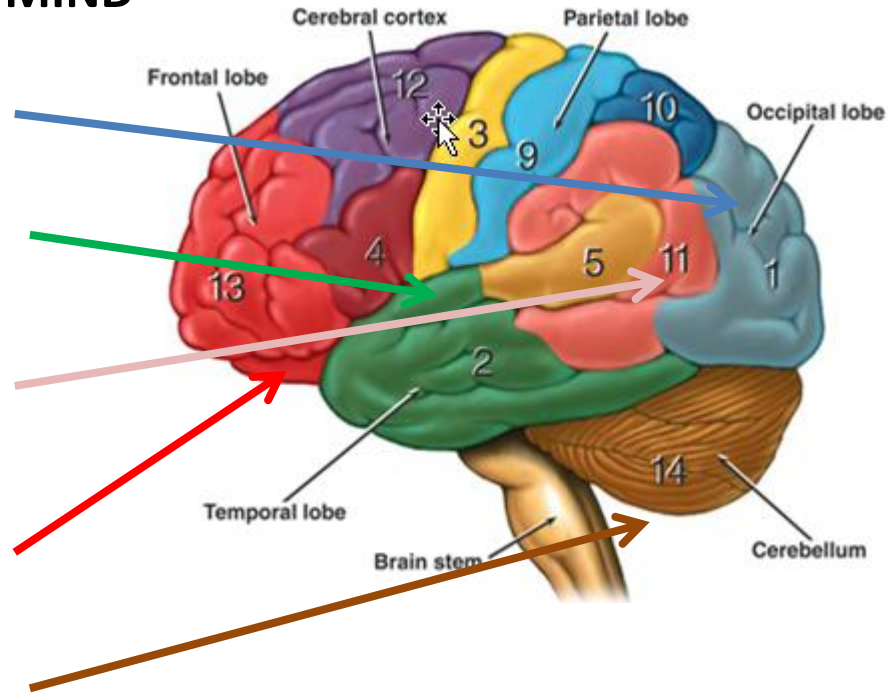
WHERE ARE THE FOLLOWING IN THE MIND?

**FAITH? FEAR? OBEDIENCE? BELIEF? LOGIC? REASON? HABITS?
LIES? MEANING? PURPOSE/GOALS? PEACE? AMBITION?
HOPE? POWER? PLEASURE? SATISFACTION? MOTIVATION?**

**WHAT DOES THE BIBLE SAY?
HOW TO INCREASE THEM?**

RELEVANT AREAS FOR THE CHRISTIAN MIND

1. VISUAL	Sight, image recognition & perception
2. ASSOCIATION	Memory Equilibrium. Emotion
6. EMOTIONAL	Pain, hunger, fight/flight
11. WERNICKE'S	Language comprehension
13. HIGHER MENTAL	Concentration Planning Judgment Emotional expression inhibition
14. MOTOR 3	Sensory association



WHERE ARE THE FOLLOWING IN THE MIND?

FATHER? SON? HOLY SPIRIT?

MIND OF CHRIST? PRESENCE OF CHRIST? FATHER'S WILL?

OUR SPIRIT? GOD'S AGENDA FOR SERVICE? OUR ROLE?

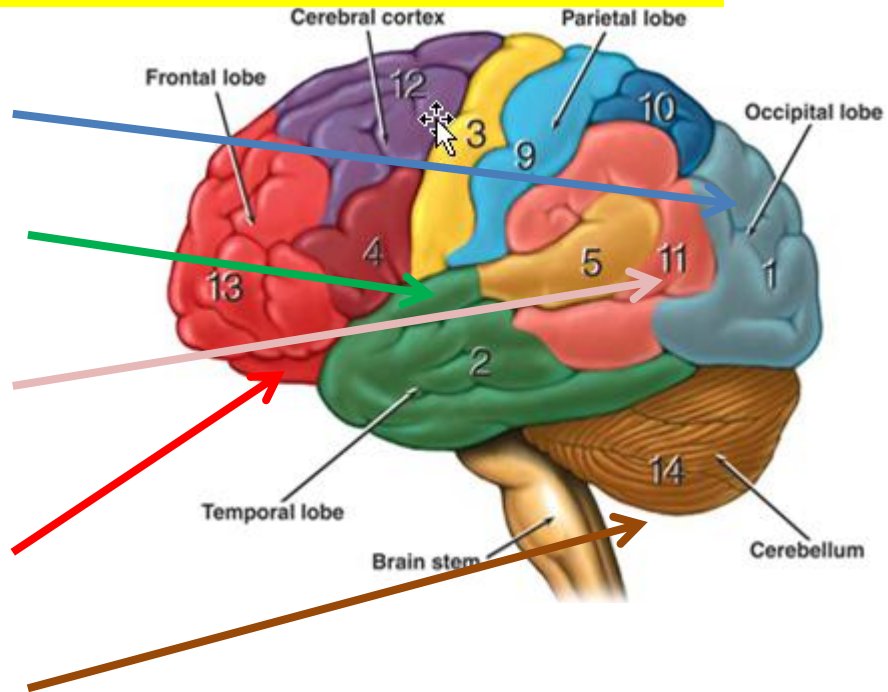
SENSE OF PLACE, HOME, BEING, BELONGING, BECOMING?

WHAT DOES THE BIBLE SAY?

HOW TO INCREASE THEM?

ISN'T GOD GREAT TO HAVE CREATED GREAT MINDS FOR US?

1. VISUAL	Sight, image recognition & perception
2. ASSOCIATION	Memory Equilibrium. Emotion
6. EMOTIONAL	Pain, hunger, fight/flight
11. WERNICKE'S	Language comprehension
13. HIGHER MENTAL	Concentration Planning Judgment Emotional expression inhibition
14. MOTOR 3	Sensory association



LOVE SPOUSE	LOVE GOD	THE WORD	THE SPIRIT	THE FATHER	JESUS	HOLY SPIRIT
LOVE CHILD	LOVE NEIGHBOUR	WAY	KNOWLEDGE OF GOOD	KNOWLEDGE OF EVIL	MIND OF CHRIST	PRESENCE OF GOD
WORSHIP	EMOTIONS	TRUTH	PEACE	PURITY	HOME	UNDERSTANDING
OBEDIENCE	HEART	LIFE	WORLDLY FACTS	MEMORIES	WISDOM	PLEASURE
FAITH	WILL	LOGIC	REASON	FEAR	HOPE	POWER
RIGHTEOUSNESS	BELIEF	CHARACTER	MEANING	AMBITION	HABITS	SATISFACTION
SIN	LIES	IDENTITY	PURPOSE/GOALS	GUILT	NEEDS	MOTIVATION

*Isa 1:18 Come now, and **let us reason together**, saith the LORD ...*

*Mar 12:30 And thou shalt love the Lord thy God with all thy heart, and with all thy soul, and **with all thy mind**, and with all thy strength: this is the first commandment.*

*Luk 5:22 But when Jesus **perceived their thoughts**, he answering said unto them, What **reason ye in your hearts?***

*Joh 15:7 If ye abide in me, and **my words abide in you**, ye shall ask what ye will, and it shall be done unto you.*

*Rom 12:2 .. be not conformed to this world: but be ye **transformed by the renewing of your mind***

*2Co 9:2 I know the **forwardness of your mind** ... your **zeal** hath provoked very many.*

*Php 4:7 And the **peace of God**, which passeth all understanding, shall **keep** your hearts and **minds** through Christ Jesus.*

Php 4:8 .. whatsoever things are true, ...honest, ...just, ..pure, ...lovely, ...good report; ... **think on these things** (note: these are the characteristics of virtue).

Col 1:21 were sometime alienated and **enemies in your mind** by wicked works

Col 3:16 Let the **word of Christ dwell** in you richly

Eph 4:23 And be renewed in the **spirit of your mind**;

Heb 4:12 For the **word of God is quick, and powerful**, and sharper than any twoedged sword, piercing even to the dividing asunder of soul and spirit, and of the joints and marrow, and **is a discerner of the thoughts and intents of the heart**.

1Pe 1:13 ... **gird up the loins of your mind** ..

1Pe 3:15 .. be ready always to give an answer to every man that asketh you a **reason** of the hope that is **in you** ...

Deu 11:18 Therefore shall ye lay up these my words in your heart and in your soul, and bind them for a sign upon your hand, that they may be **as frontlets between your eyes.**

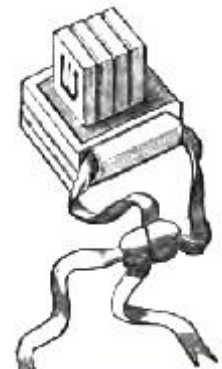
Deu 11:19 And ye shall teach them your children, speaking of them when thou sittest in thine house, and when thou walkest by the way, when thou liest down, and when thou risest up.

Deu 11:20 And thou shalt write them upon the door posts of thine house, and upon thy gates:

NOTE: 1. Meaning they should keep the law distinctly in view and carefully attend to it.
2. NOTE THE SIGNIFICANCE OF THE LOCATION OF THESE “FRONTLETS”

Literal Frontlets? [Exodus 13:16](#) ; [Deuteronomy 6:8](#) , [11:18](#) .

Soon after the Jews returned from Babylon they began to interpret this injunction literally, and had accordingly portions of the law written out and put into a small leather case and tied with a thong around the forehead.



Eze 3:7 But the house of Israel will not hearken unto thee; for they will not hearken unto me: for all the house of Israel *are impudent and hardhearted.*

Eze 3:8 Behold, I have made thy face strong against their faces, and thy forehead strong against their foreheads.

Eze 3:9 **As an adamant harder than flint have I made thy forehead:** fear them not, neither be dismayed at their looks, though they *be a rebellious house.*

Eph 6:16 Above all, taking the shield of faith, wherewith ye shall be able to quench all the fiery darts of the wicked.

Eph 6:17 And take the **helmet** of salvation, and the sword of the Spirit, which is the word of God:

Sin-abounding
Evil-abounding
Ignore-or-hate-God
No-life---dying-daily
Name-of-Jesus-is-offensive
Random-storage-of-facts
Impure/unclean-thinking
No-peace---disharmony-warlike
Prefer-feelings-to-thinking
Prefer-fantasy-to-reality
Wicked-and-deceived-heart
No-real-satisfaction
No-meaning
No-identity
Ambitious
No-Word

Flawed-logic
Lies-abounding
Home---more-like-hell
Goals---none-or-selfish
Selfish-motivations
No-understanding
No-presence-of-God
Power-paramount
Fear-abounding
No-care-for-God-the-Father
Ignore-maltreat-child
Selfish-needs
Bad-habits
No-wisdom

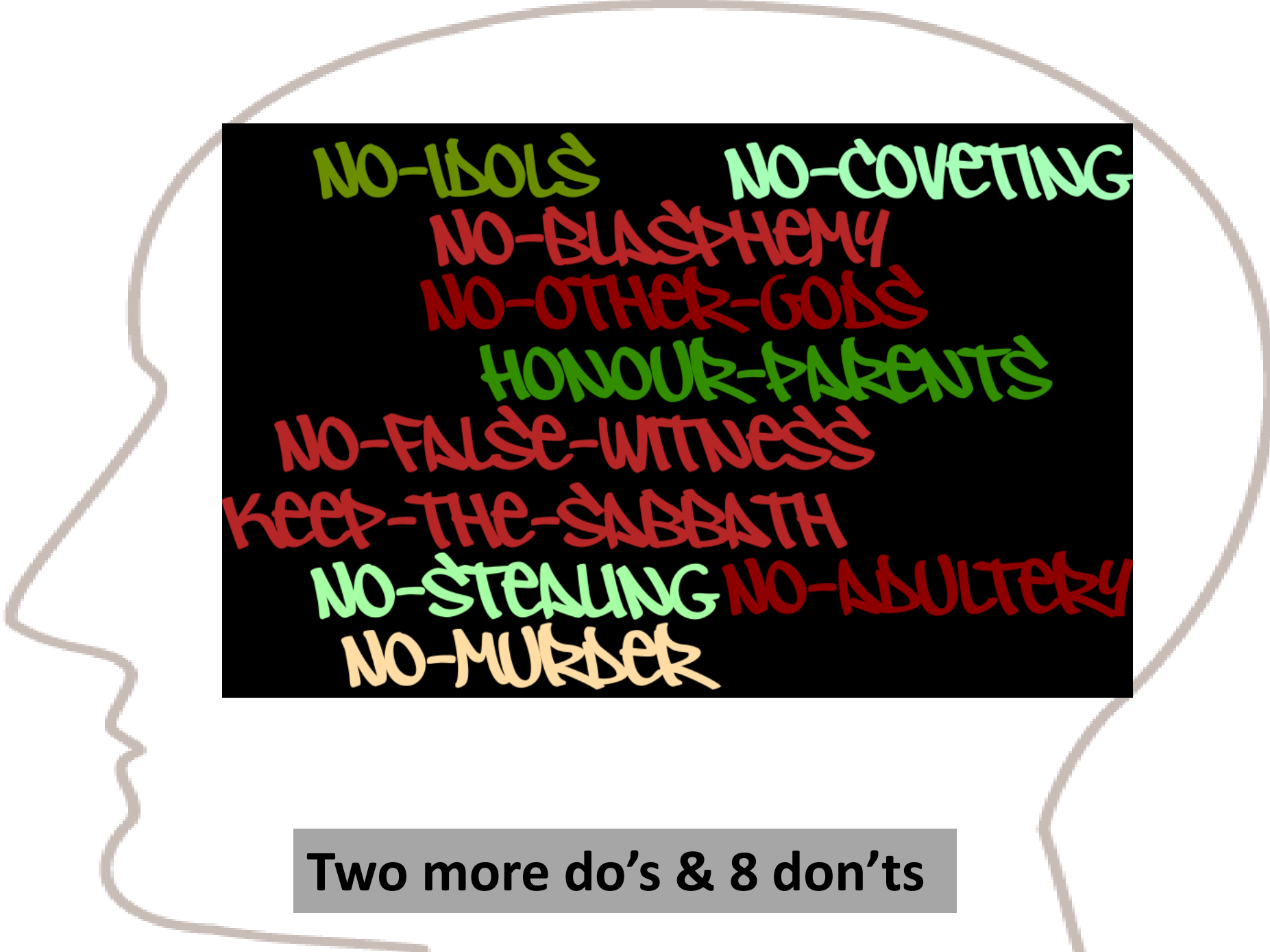
No-truth
irrelevant
Guilt-laden
Corrupt-character
Few-beliefs
Pleasure-paramount
Unsatisfying-memories
Uncaring-about-neighbour
Unrighteous
No-Holy-Spirit
Suppressed-knowledge-of-God
Hate-maltreat-devalue-spouse
No-access-to-mind-of-Christ
Weak-willed
Self-worship
No-strategy
Uncontrolled-emotions
Disobedience
No-hope
Faithless

THE AVERAGE UNSAVED WORLDLY MIND



OTHER-GODS MURDER
DISHONOUR-PARENTS IDOLS ADULTERY
BLASPHEMY FALSE-WITNESS
NO-SABBATH
STEALING
COVETING

ANY OF THESE?



NO-IDSOLS NO-COVETING
NO-BLASPHEMY
NO-OTHER-GODS
HONOUR-PARENTS
NO-FALSE-WITNESS
KEEP-THE-SABBATH
NO-STEALING NO-ADULTERY
NO-MURDER

Two more do's & 8 don'ts

Hands-that-shed-innocent-blood

Deceitful-witness---uttering-lies

A-lying-tongue Sowing-discord-among-brethren

A-heart-that-devises-wicked-plots

Feet-that-are-swift-to-run-into-mischief

A-proud-look

THE ABOMINABLE MIND (Proverbs 6:16-19)

A list of sins from Galatians 5:19-21 arranged in a circular pattern within a thought bubble. The sins are: Lasciviousness, Variance, Wrath, Drunkenness, Seditious, Envyings, Uncleaness, Adultery, Revellings, Emulations, Heresies, Idolatory, Strife, Murders, Sorcery, and Hatred. The words are in various colors (red, green, brown) and orientations.

THE GALATIANS 5:19-21 MIND

A light gray thought bubble outline surrounds a black rectangular box. Inside the box, the seven deadly sins are written in various colors and orientations: Greed (green, top right), Lust (blue, top center), Pride (green, top left), Envy (red, middle right), Wrath (red, bottom right, vertical), Gluttony (green, bottom left), and Sloth (green, bottom right, vertical).

Greedy
Pride Lust
Envy
Gluttony Wrath
Sloth

THE SIN-LADEN MIND (with the 7 deadly sins)

WISDOM THE-WORD PURITY LIFE
THE-SPIRIT WAY RIGHTEOUSNESS WORSHIP
PURPOSE/GOAL HOPE FAITH MIND-OF-CHRIST
PRESENCE-OF-GOD UNDERSTANDING JESUS LOVE-NEIGHBOUR
KNOWLEDGE-OF-GOOD THE-FATHER
TRUTH BELIEF HOLY-SPIRIT OBEDIENCE IDENTITY
LOVE-GOD MEANING PEACE

THE HEAVENLY MIND – WHAT’S GOT TO GET IN & WORK WELL.

Each one a pilgrimage – an experiential mountain to climb.

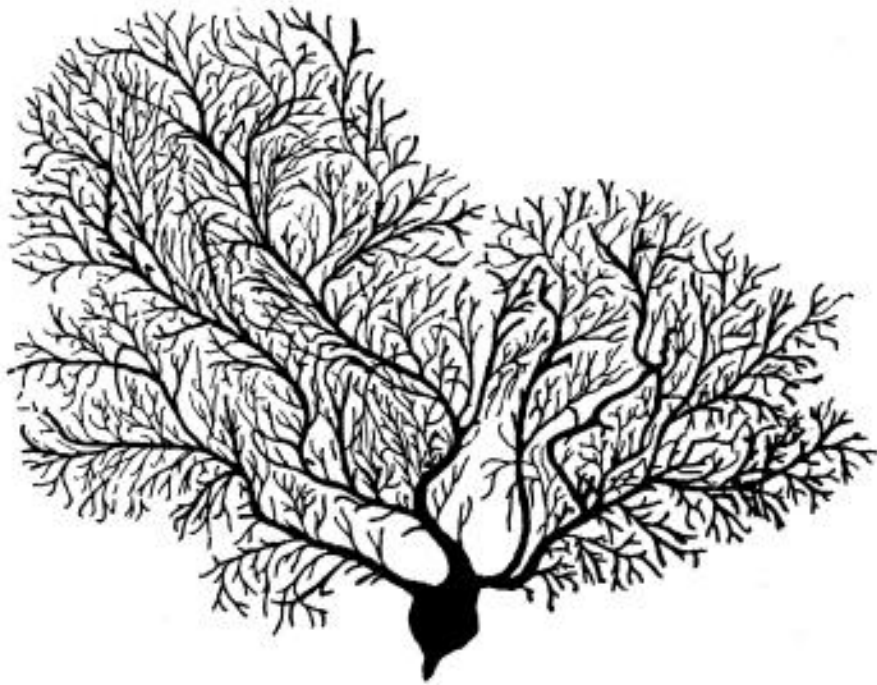


Fig. 54. Purkinje cell from cerebellum of man 63 years old. 175 diameters.



MEMORIES
FEAR HABITS LIES
LOVE-SPOUSE REASON
GUILT FRIENDS CHARACTER SIN
SATISFACTION EMOTIONS-FEELINGS
WORLDLY-FACTS KNOWLEDGE-OF-GOOD
LOGIC HOMEPOWER KNOWLEDGE-OF-EVIL
NEEDS LOVE-CHILD PLEASURE MOTIVATION
HEART AMBITION
WILL

THE WORLDLY MIND



A word cloud of Christian concepts is arranged within a grey outline of a human head in profile, facing left. The words are in various sizes and colors, including red, orange, and black. The words include: PURITY, MEMORIES, EMOTION, TRUTH, POWER, THE-WORD, AMBITION, WAY, JESUS, LIFE, WISDOM, SATISFACTION, WORSHIP, HEART, RIGHTEOUSNESS, SIN, OBEDIENCE, MEANING, CHARACTER, UNDERSTANDING, LOVE-GOD, KNOWLEDGE-OF-EVIL, THE-FATHER, KNOWLEDGE-OF-GOOD, PRESENCE-OF-GOD, LOVE-NEIGHBOUR, WORLDLY-FACTS, WILL, MIND-OF-CHRIST, PURPOSE/GOALS, REASON, LOVE-SPOUSE, HOLY-SPIRIT, PLEASURE, HOME, LOVE-CHILD, MOTIVATION, HOPE, IDENTITY, THE-SPIRIT, PEACE, FEAR, HABITS, BELIEF, FAITH, LOGIC, NEEDS, GUILT, LIES.

THE CHRISTIAN MIND (STRANGERS & PILGRIMS)

See Heb 11:13 & 1Pe 2:11

CONCLUSION?

- our minds are beautifully designed
- they are very capable
- we need reins for the rider. Whose moral compass?
- the rider & elephant need to be aligned
- the unsaved, ungodly mind is full of junk
- only the Word & the Holy Spirit can renovate the mind
- Jesus must be front and centre. So too faith & flint.
- a lot of mind development to do, our whole lives must be devoted to it. God must be glorified in our minds
- what do we want in our mind – a garden or a weed-bed
- tabernacle in the mind?
- close with prayer